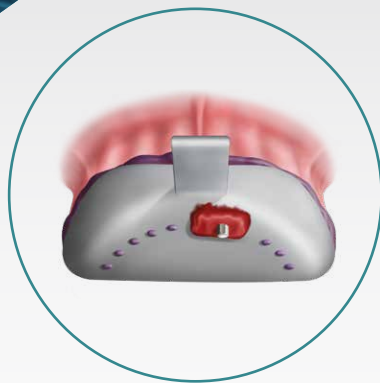


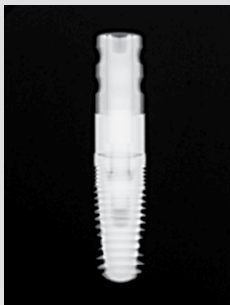
Implant Impression-Taking Techniques



Technical Hotline
800-839-9755



Radiograph Verification



Before taking an impression using either the closed-tray or open-tray impression technique, take a radiograph to verify that the impression coping is seated correctly (*Fig. 1*).

Fig. 1

Impression Coping Chart

	CLOSED TRAY	OPEN TRAY	ANALOG	BRAND		
						
						
						
	Hahn™ Tapered Implant System	BIOMET 3i™ Certain®	ASTRA TECH	NobelReplace®	Zimmer Dental TSV	BioHorizons® Internal



Fig. 2a



Fig. 2b

If it is not seated correctly (Figs. 2a, 2b), continue to reseat and verify with a radiograph until properly seated. If it is even slightly off, the final restoration may not fit due to incorrect angulation and orientation.

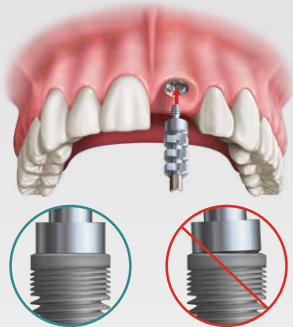
PrimaConnex®	Neoss®	Straumann® Bone Level	NobelActive®	Nobel Brånemark System®	CAMLOG®

All trademarks are property of their respective owners.

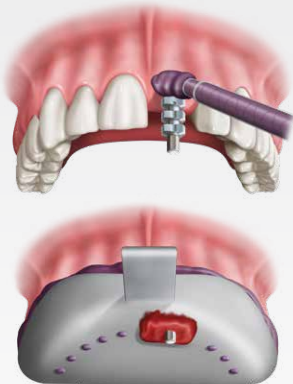
Open-Tray Impression Technique



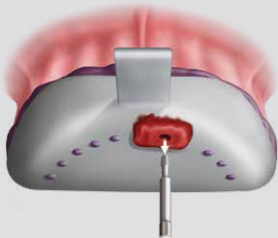
STEP 1: Remove the healing abutment from each implant and immediately replace it with an open-tray impression coping.



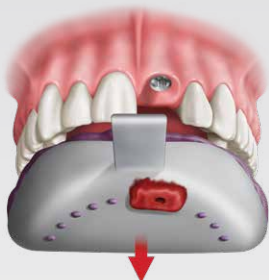
STEP 2: Hand-tighten the guide pin. If multiple implants are involved, work from the most posterior implant. Verify with a radiograph that each impression coping is fully engaged.



STEP 3: Prepare the tray by creating an access hole for each impression coping. Try in the tray before filling with impression material to ensure copings align with the hole(s) created. Inject light-body syringe material around each impression coping. Fill the tray with medium- or heavy-body material and record the impression. Make sure enough material is injected to support the impression coping for an accurate impression.



STEP 4: Once the impression sets, remove each guide pin. Ensure all guide pins are completely disengaged before removing the impression from the patient's mouth.



STEP 5: To avoid soft-tissue collapse around each implant, immediately place healing abutments on all implants before continuing.



STEP 6: Place the guide pins into the impression and send the case to Glidewell.

IMPORTANT: The open-tray, or pickup, technique is required when implants are not parallel and the path of insertion is divergent. If closed-tray impression posts are used in this situation, it may prevent removal of the impression tray from inside the patient's mouth.

Closed-Tray Impression Technique



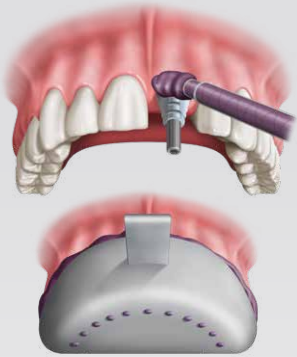
STEP 1: Use the appropriate instrument to remove the healing abutment. If multiple implants are involved, start with the posterior implant, working forward. Remove one healing abutment at a time.



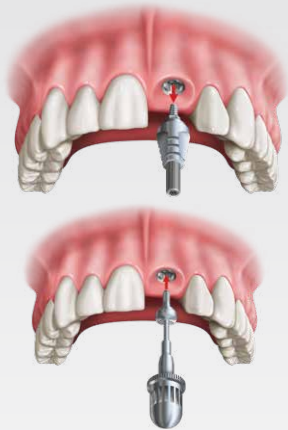
STEP 2: Place the impression coping onto each implant, ensure the coping is fully seated, and hand-tighten the screw.



STEP 3: Take a radiograph to verify all parts are seated. When working with multiple implants, place all impression copings in one arch before taking the radiograph.



STEP 4: Inject light body syringe material around each impression coping. Fill the tray with medium- or heavy-body material and record the impression. Make sure enough material is injected to support the impression coping for an accurate impression.



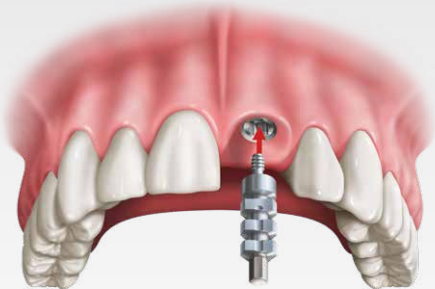
STEP 5: Using the recommended instrument, remove the impression coping from the patient's mouth and replace the healing abutment.



STEP 6: After taking the impression, place the impression coping in a sealed plastic bag and carefully package the impression for shipment to Glidewell. The lab will reinsert the transfer coping into the impression in the correct orientation.

Implant Impression-Taking Techniques

- Take a radiograph to ensure that the implant impression coping is completely engaged and fully seated.
- Choose a custom, full-arch or quadrant impression tray with a separate bite registration for best results.
- If a double-arch impression tray is used, make sure the patient does not bite onto the plastic support. Provide a separate bite registration.
- Using a heavy body in the impression tray with a light-body syringe material around the impression coping will help to eliminate any voids.
- Allow the impression material to fully set before removal by setting a timer for two minutes past the manufacturer's setting time.



Make sure implant system and diameter for all prescribed implants is noted on Rx.

Carefully package impression for shipment to Glidewell. Ensure all small components are secure in sealed plastic bags.

Technical Hotline
800-839-9755



MKT-012730_2 GL-4322-030922