

GLIDEWELL IMPLANT LIBRARIES FOR 3Shape

DOWNLOAD AND IMPORT INSTRUCTIONS



866-791-9538 • glidewell.com

Requirements.....	3
Download the Files.....	3
Import the Files Into 3Shape.....	3
Create Implant Selection Category.....	7
Customer Technical Support	10

1.0 REQUIREMENTS

- 1.1 Use Inclusive Titanium Scan Bodies, which are available for purchase via glidewelldirect.com/scanbodies or 888-303-3975.
- 1.2 Must have the Abutment Designer Module in 3Shape and dongle must be updated. If you have any questions regarding this, please contact Customer Technical Support (technicalsupport@glidewelldental.com or 866-791-9538) for more information.
- 1.3 3Shape Dental System™ must be updated to at least 2016 to use the Glidewell Implant Library.

2.0 DOWNLOAD THE FILES

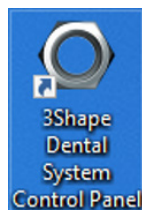
- 2.1 Access the Glidewell Implant Library from glidewell.com/implant-library.
- 2.2 Select the system you wish to get libraries for.
- 2.3 Click on the **Download** link.

MANUFACTURER	SYSTEM	ABUTMENT KIT	DOWNLOAD FILE	
Biomet 3i™	Certain	<ul style="list-style-type: none"> ■ 3.4 Ti ■ 3.4 - 4.5mm ■ 3.4 - 6mm ■ 3.4 Hybrid Bar ■ 4.1 Ti ■ 4.1 - 4.5mm ■ 4.1 - 6mm ■ 4.1 Hybrid Bar 	<ul style="list-style-type: none"> ■ 5.0 Ti ■ 5.0 - 4.5mm ■ 5.0 - 6mm ■ 5.0 Hybrid Bar ■ 6.0 Ti ■ 6.0 - 4.5mm ■ 6.0 - 6mm ■ 6.0 Hybrid Bar 	<ul style="list-style-type: none"> ■ GLW_3iCertain_IOSDP_EncryptionC.dme

- 2.4 You will be prompted to save a .ZIP file in a method specific to the internet browser you are using.
- 2.5 Save the .ZIP file into a location on your computer.
- 2.6 Locate the .ZIP file and extract the contents.
- 2.7 You now have a file that ends with a .DME.

3.0 IMPORT THE FILES INTO 3SHAPE

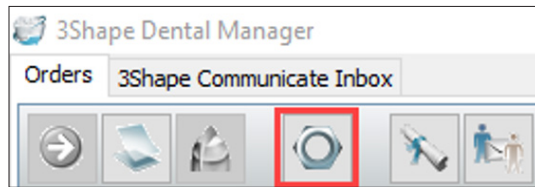
- 3.1 Launch your 3Shape Dental System Control Panel:
 - 3.1.1 Select the control panel shortcut from your desktop.



GLIDEWELL IMPLANT LIBRARIES

IMPORT THE FILES INTO 3SHAPE 2022

3.1.2 Launch the control panel from Dental Manager.



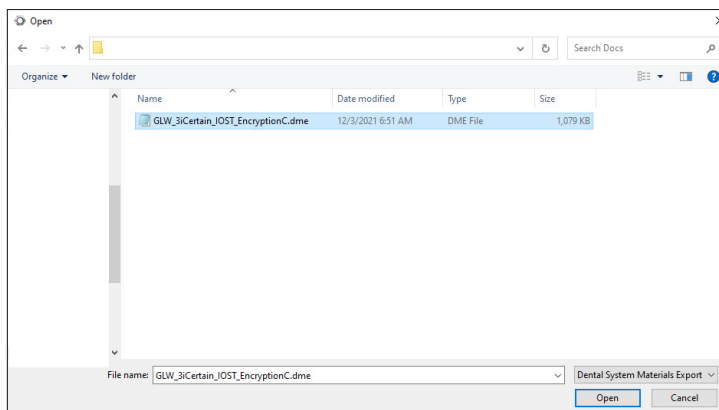
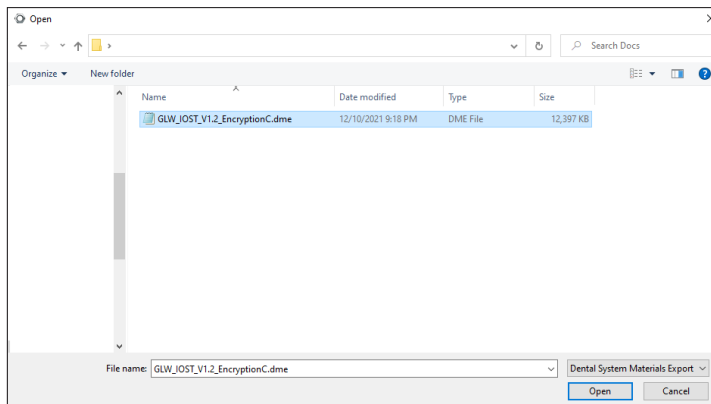
3.2 From the main menu, go to **Tools > Import/Export**.



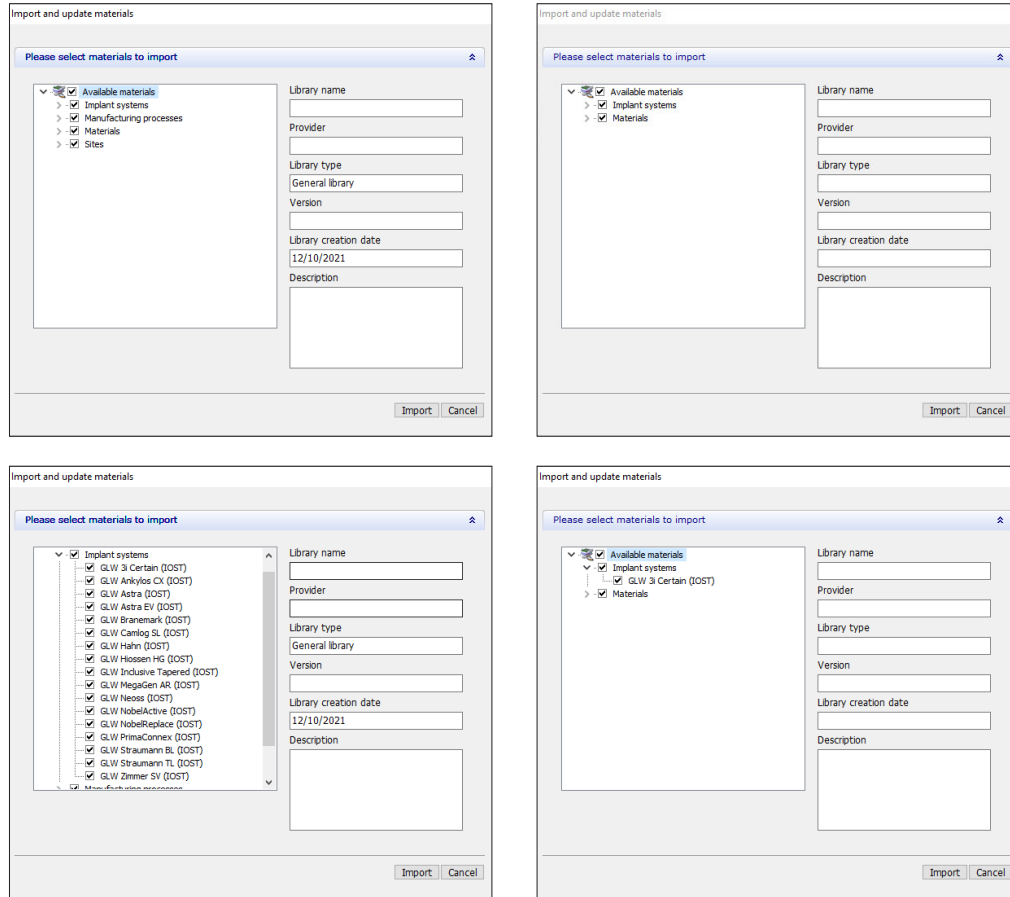
3.2.1 Select **Import materials**.

3.2.2 From the window that opens, locate the file (ending with “.dme”) you have downloaded and extracted.

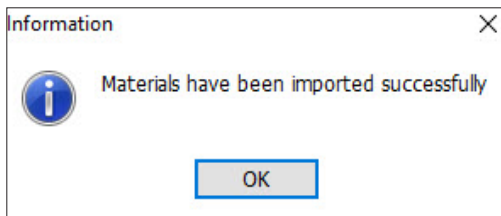
3.2.3 Select the file and click **Open**.



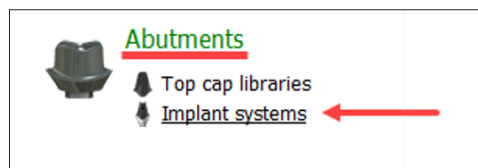
- 3.2.4 You will be prompted to select the materials to import.
Accept the default selected and click **Import**.



- 3.2.5 You will receive confirmation if the materials have been saved successfully.



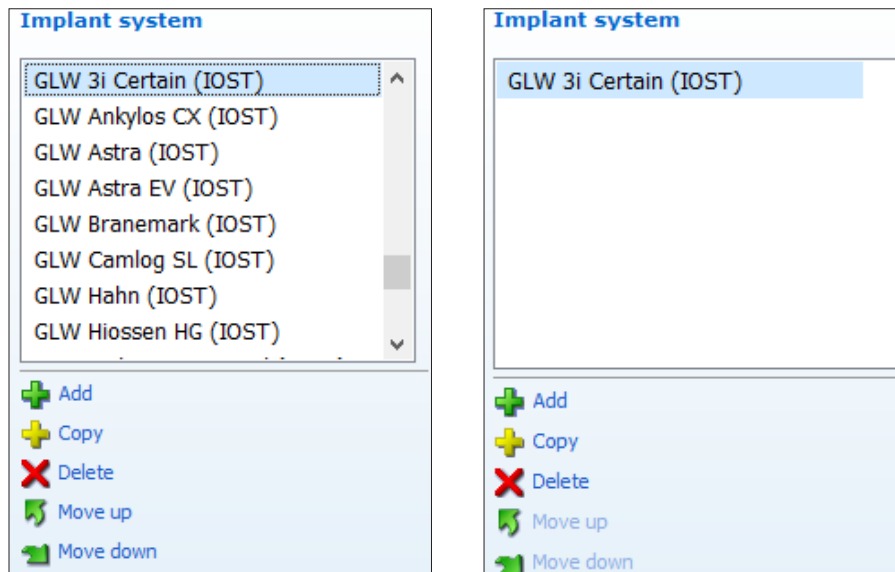
- 3.2.6 Click **OK**.
3.2.7 Confirm that the file has been imported by going to **Abutments > Implant systems**.



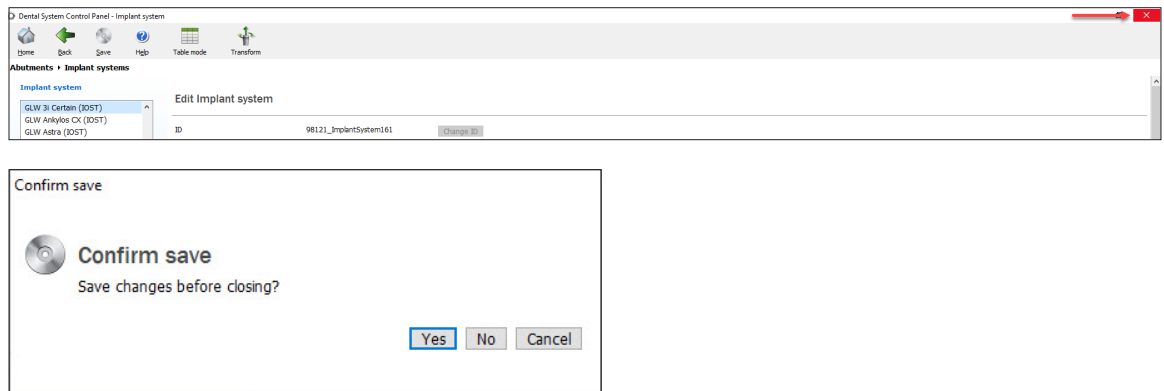
GLIDEWELL IMPLANT LIBRARIES

IMPORT THE FILES INTO 3SHAPE 2022

3.2.8 Under **Implant systems**, you will see the library that was imported.



3.2.9 Close the application by clicking on the “X” at the top-right corner. When the **Confirm save** window appears, click **Yes**.



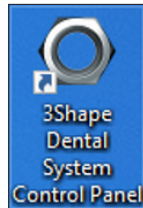
3.2.10 You are now ready to use the libraries.

4.0 CREATE IMPLANT SELECTION CATEGORY

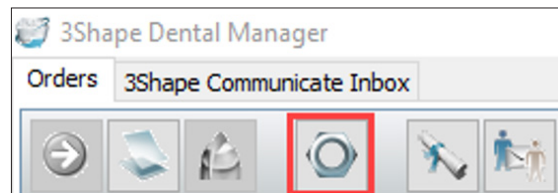
Implant selection categories help organize all of your implant system libraries so you can find a particular library more easily.

4.1 Launch your 3Shape Dental System Control Panel:

4.1.1 Select the control panel shortcut from your desktop.



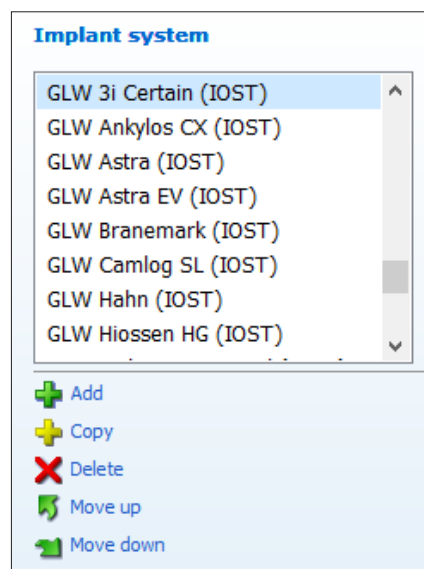
4.1.2 Launch the control panel from Dental Manager.



4.2 From the main menu, go to **Abutments > Implant systems**.



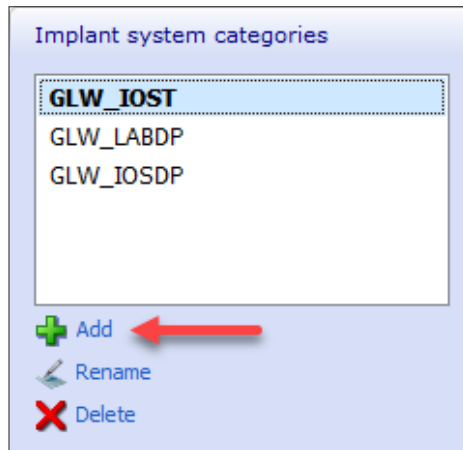
4.3 Select the implant system you would like to add to the new category.



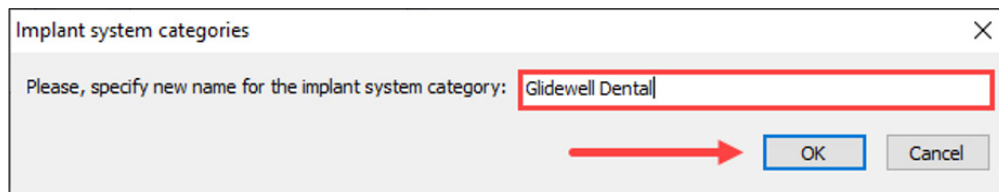
GLIDEWELL IMPLANT LIBRARIES

CREATE IMPLANT SELECTION CATEGORY 2022

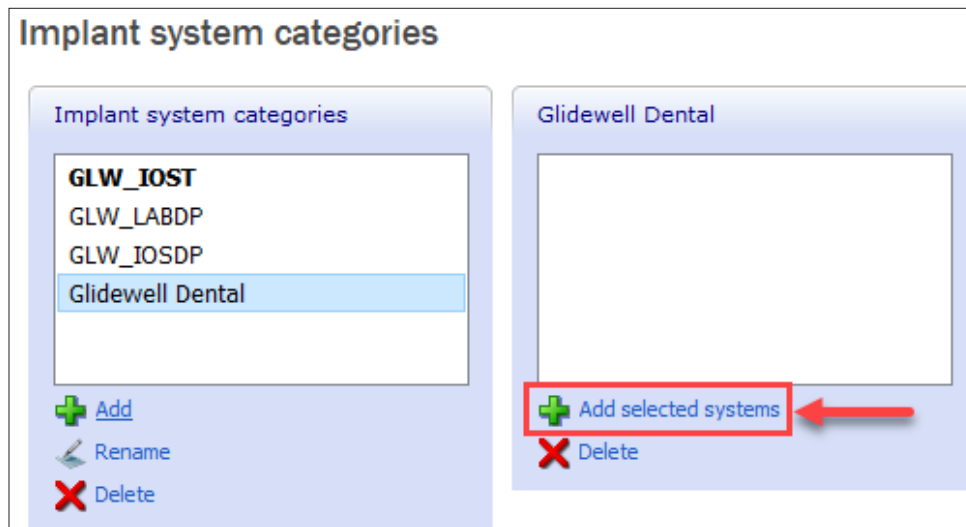
4.4 Scroll down to **Implant system categories** and click **Add**.



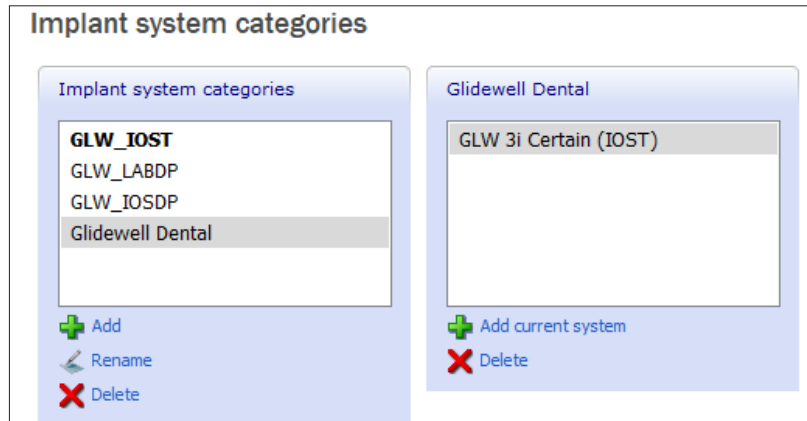
4.5 Specify the new name for the category you are creating. Click **OK** when completed.



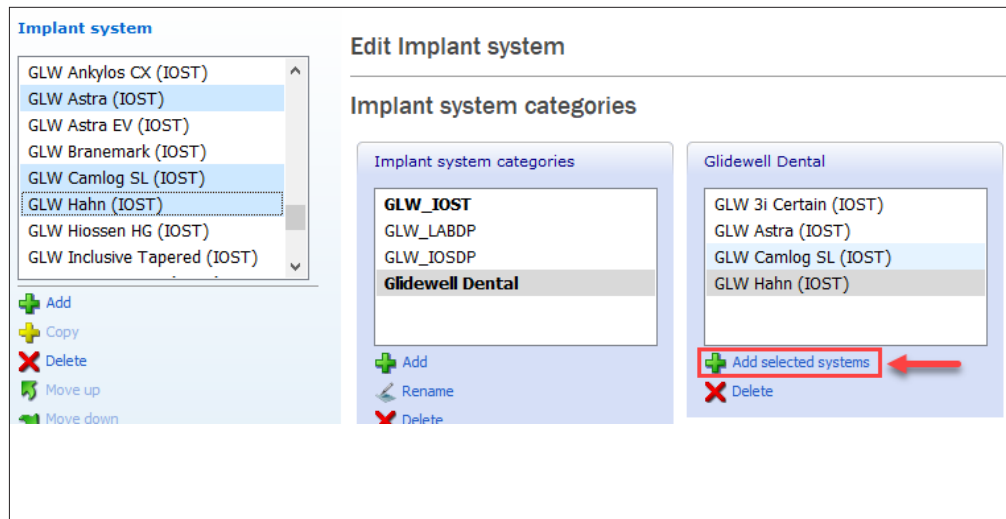
4.6 Click on **Add current system**.



4.6.1 Once added, the implant system will show up under the category you created.



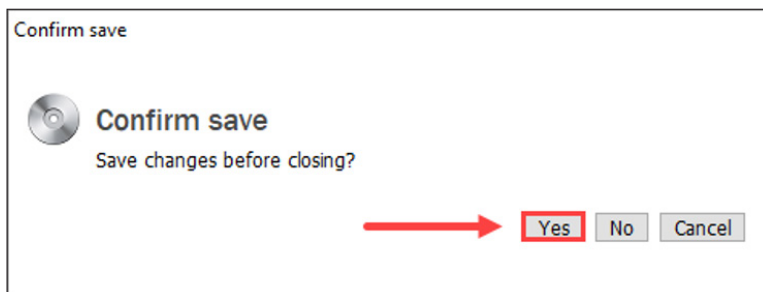
4.6.2 To add multiple implant systems, go back to the main **Implant system** section and make multiple selections (to do this, hold **Ctrl** and click on the desired implant systems). Implant system categories will show up right next to the implant systems if multiple selections are made. To add these selections, click on **Add selected systems**.



4.7 Once completed, close the application.



4.8 When the **Confirm save** window appears, click **Yes**.



5.0 CUSTOMER TECHNICAL SUPPORT

5.1 Hours: 5 a.m.–5 p.m. PST

5.2 Email: technicalsupport@glidewell dental.com

5.3 Phone: 866-791-9538



866-791-9538 • glidewell.com

GL-4781-022322