

METAL QUADRANT IMPRESSION TRAY



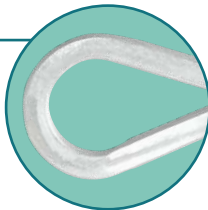
Modeled After Dentistry's Best-Selling Metal Quadrant Impression Tray

For over a decade, this tray design has been a popular choice for dental clinicians. Compared with flimsy plastic trays, the Metal Quadrant Impression Tray is inflexible. Today, the Metal Quadrant Impression Tray delivers unparalleled accuracy and ease of use.

ADVANTAGES

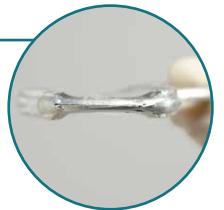
Inflexible

The tray's rigid aluminum construction is memory-free and dead soft. It does not flex.



25% Thinner Distal Bar

To prevent distortion due to impingement in the retromolar pad area, the distal bar is thin and tapered.



Wide Arch

The wide arch design prevents burn through of the teeth, a common problem with most plastic trays.



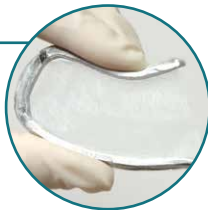
Shorter Lingual Wall

Without limiting the number of teeth you can impress (up to four), the lingual wall of the Metal Quadrant Impression Tray is designed to prevent impingement on the lingual of the patient's anterior teeth, particularly in smaller mouths.



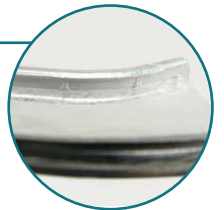
Customizable

Adjust the tray's arch width to suit virtually any patient's arch size.



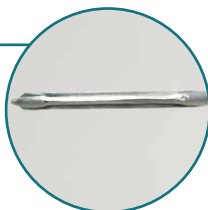
Retention Bars

Two upper and two lower retention bars along the inside of the buccal and lingual tray walls help lock the impression material to the tray, preventing material dislodgement.



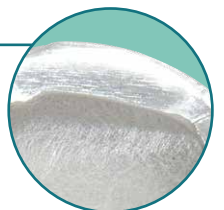
Low Sidewalls

This design feature prevents palatal impingement and axial roll of the tray wall, which are common causes of distortion.



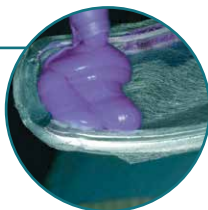
Attached Mesh

With no loss of rigidity, the Metal Quadrant Impression Tray is one of the only metal trays with attached mesh. This design detail prevents impression material from dripping and ensures it flows around the distal wall, forming a secure lock between the material and tray.



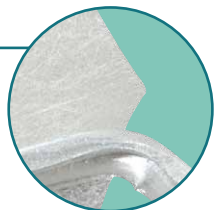
Easy To Use

The quadrant technique used with this product makes impressions easy.

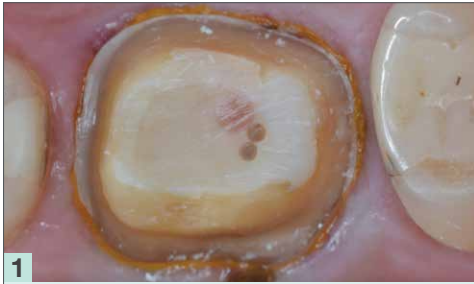


Extended Mesh

The mesh extends slightly toward the handle to ensure the accurate capture of up to four teeth.



CLINICAL TECHNIQUE



1

With tissue management and hemostasis achieved, clean the preparation with a Pre-Impression Cleansing Gel to remove any residual debris and hemostatic agent. This will ensure complete polymerization of the VPS Tray Material and Light Body VPS material.



2

Place the Light Body impression material after the retraction cord has been carefully removed, making sure to keep the tip submerged.



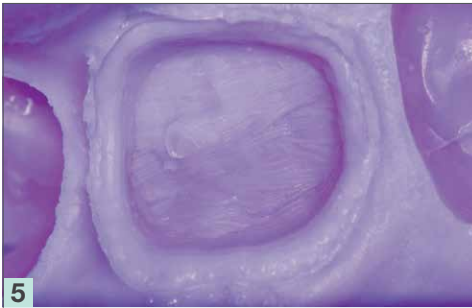
3

Place the impression tray immediately upon completing the syringing of the Light Body. Ask the patient to passively close. If no segmental bite registration has been taken prior to the impression, the patient may need to be guided into position.



4

While holding the tray by the sides, gently remove the impression from the patient's mouth. Never torque the handle of the tray to prevent bending of the aluminum body.



5

The final impression should show excellent capture of the margins. It should also show that the light body was not overly displaced by the hydraulics of the tray material. This ensures a more accurate die and better fit of the final restoration.



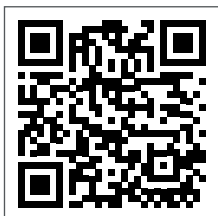
6

This final photograph shows the bonded ceramic restoration which needed virtually no adjusting interproximally and occlusally post-cementation.

Dentistry courtesy of Brad Carson, DDS. Photography courtesy of Gildo Santos, DDS.

AVAILABLE PACKS

- Metal Quadrant Impression Trays, 50-Pack, 70-1026-CAP0009
- Metal Quadrant Impression Trays, 250-Pack, 70-1026-CAP0010



To view the latest news,
education and more, visit:
888-303-3975
glidewelldirect.com

 **Glidewell**
for the sake of smiles

MKT-013455_1 GD-3915001-042623