



Step-by-Step Restorative Protocol

■ FIRST APPOINTMENT

Preliminary Impressions and Prosthesis Duplication



Note: Open-tray impressions are recommended for greater accuracy.



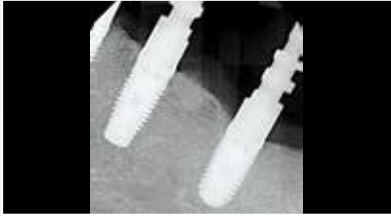
- Remove the patient's healing abutments or existing prosthesis.



- Seat impression copings.

FIRST APPOINTMENT

Preliminary Impressions and Prosthesis Duplication



- Take periapical radiographs to verify complete seating.



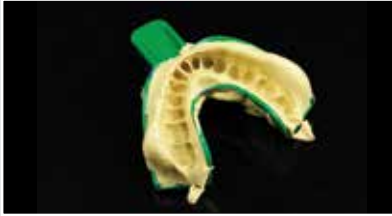
- Check the impression tray for proper fit.



- Prepare holes in the tray that align with each coping.



- Take a VPS impression of the edentulous arch.



- Take a VPS impression of the opposing arch.



- Duplicate the patient's existing prosthesis or denture using VPS putty.

For assistance with denture duplication contact Glidewell.



- Replace the patient's healing abutments or existing prosthesis. Complete an Rx, identifying implant system and diameters. Take a bite registration.



- Select the tooth shade. List any changes to the existing denture or prosthesis on the Rx.



- Send the impressions, completed Rx and a smile photo of the patient wearing existing denture or prosthesis to Glidewell.

Have questions? Call 866-861-7955 or check out our how-to videos below.



Preliminary Impression

<http://bit.ly/PerfectingOpenTray>



Prosthesis Duplication

<http://bit.ly/InOfficeDentureDuplicate>