



**HAHN**<sup>™</sup>  
TAPERED IMPLANT SYSTEM

MAKE IMPLANTS  
A BIGGER PART OF  
YOUR PRACTICE



# TREAT MORE PATIENTS AND LOWER YOUR COSTS

If you are among the growing number of dentists seeking to expand the implant services you offer patients, the Hahn™ Tapered Implant System can help your practice thrive through world-class education, everyday cost savings and the strongest lifetime warranty in implant dentistry — from Hahn implant to BruxZir® restoration. The Hahn implant is available at a fraction of the price of other premium implant systems and saves you 20% every time you restore your case at Glidewell. As the latest from Dr. Jack Hahn — creator of the NobelReplace® implant — the Hahn implant offers distinct advantages:

- **Documented high success rate in two clinical studies<sup>1,2</sup>**
- **Streamlined surgical protocol with length-specific drills**
- **Deep, sharp threads to maximize primary stability**

The design of the Hahn Tapered Implant is based on Dr. Jack Hahn's more than 50 years of clinical experience. Along the way, Dr. Hahn has pioneered key innovations that have helped make implantology the predictable form of treatment it is today. When Dr. Hahn formed a partnership with Glidewell Founder and President Jim Glidewell, CDT, to create the Hahn Tapered Implant, they found a shared philosophy in making high-quality implant treatment available to more patients by reducing the cost of care.

“During my career, I've discovered what works and what doesn't, and I'm happy to share the Hahn implant, which is the culmination of everything I've learned, with my fellow clinicians at a price that helps grow the dental practice. You can pay nearly three times as much for an implant I designed for Nobel, but you're not going to get better results.”

— Jack A Hahn, DDS

*Dr. Hahn and Jim Glidewell display the Hahn Tapered Implant — the culmination of decades of clinical observations and innovation.*





# GLIDEWELL AND THE MISCH-RESNIK IMPLANT INSTITUTE

Dr. Hahn has taught for the world-renowned Misch International Implant Institute, which has educated over 6,000 dentists in implant placement and restoration based on research-based principles. The Hahn Tapered Implant serves as the official implant of the institute, and is used during the hands-on and clinical courses to teach dentists straightforward surgical protocols.



Dr. Jack Hahn with the late Dr. Carl Misch in 2016.



The Hahn Tapered Implant System is the exclusive implant utilized during Misch-Resnik Institute courses. The implant thread design features an excellent cutting edge that provides predictable implant insertion, and the surgical kit supports a simplified surgical protocol.

*It has simplified the surgical and the prosthetic protocol immensely. With the Hahn system, each implant has a specific final drill, so you don't need drill stops. You don't have to look at the black lines. It makes implants so easy.*

**– Randolph R. Resnik, DMD, MDS**

Director of the Misch-Resnik Implant Institute



# PROVEN, TIME-TESTED IMPLANT DESIGN FEATURES

# 99.2%

SURVIVAL RATE<sup>2</sup>

# 0.2 mm

AVERAGE BONE LOSS  
IN 2-YEAR STUDY<sup>2</sup>

## REDUCED MARGINAL BONE STRESS<sup>3</sup>

Convergent implant neck design minimizes forces on cortical bone.

## ENHANCED BIOLOGICAL SEAL<sup>3,14</sup>

Platform-shifted abutment interface and conical connection provide excellent seal, stability and tissue preservation.

## RBM SURFACE TECHNOLOGY<sup>4-6</sup>

Resorbable blast media (RBM) surface treatment results in textured, ultra-clean surface that promotes osseointegration.

## SWIFT INSERTION<sup>7</sup>

Dual-lead thread pattern with self-tapping grooves.



## CRESTAL BONE AND SOFT-TISSUE PRESERVATION<sup>3,8-10</sup>

Machined collar surface leads to 25-times less biofilm attachment and mitigates peri-implantitis. Coronal microthreads reduce crestal bone loss.

## HIGH PRIMARY STABILITY AND DIRECTIONAL CONTROL DURING PLACEMENT<sup>11,12</sup>

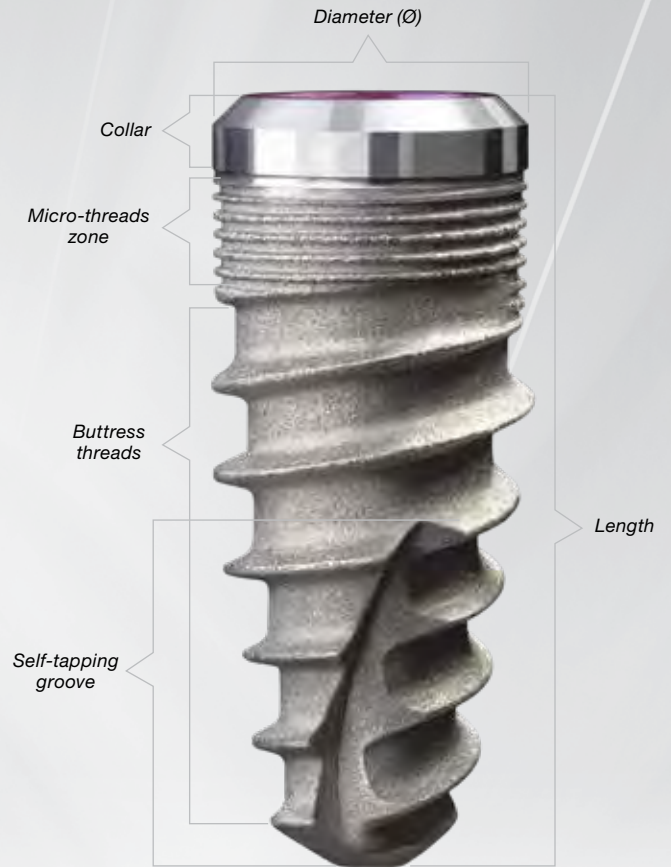
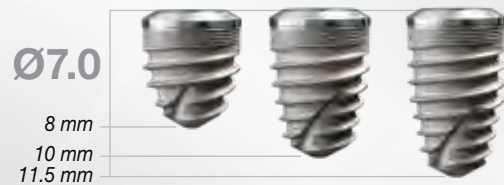
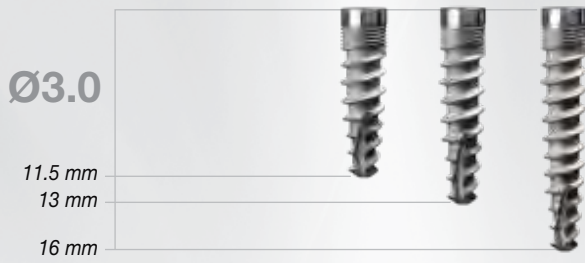
Deep, sharp threads maximize initial stability for immediate load opportunities and long-term success.

## TAPERED IMPLANT BODY<sup>13</sup>

Tapered body shape — a design feature originally conceived by Dr. Jack Hahn — eases placement in anatomically constricted areas.



# TECHNICAL SPECIFICATIONS



*Each Hahn Tapered Implant is packaged with a titanium carrier designed for easy delivery, color-coded by implant diameter.*

# A SOLUTION FOR EVERY INDICATION

Hahn can help you perform the full range of surgical procedures with confidence.

## Immediate Provisionalization and Esthetic Outcomes

Achieve high primary stability and natural-looking results

*Clinical dentistry and images by Jack A. Hahn, DDS*



Fractured central incisor, prior to extraction and immediate replacement with 4.3 mm x 13 mm Hahn implant.



Restoration four months after immediate placement and provisionalization of Hahn implant.



Beautiful final BruxZir® restoration enabled by high primary stability and excellent soft-tissue maintenance.

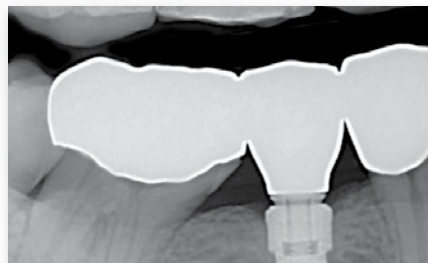
## Single-Unit Posterior

Streamlined surgical protocol and pronounced thread design simplify implant placement

*Clinical dentistry and images by Justin Chi, DDS, CDT*



Edentulous posterior space



Restoration of 4.3 mm x 11.5 mm Hahn implant



Final BruxZir® screw-retained crown

## Limited Space

Robust 3 mm implant allows for restoration of narrow ridges and tight interproximal spaces

*Clinical dentistry and images by Jack A. Hahn, DDS*



Congenitally missing lateral incisor



Ø3.0 mm Hahn Tapered Implant



Final restoration of tooth #10



# A SOLUTION FOR EVERY INDICATION

## Edentulous Ridges

Flexible positioning, precise control during placement and ease of placement in limited space ideal for long-span and full-arch cases

*Clinical dentistry and images by Paresh B. Patel, DDS*



Patient presented with terminal dentition and agreed to full-arch implant treatment.



Deep, sharp threads of the Hahn implant helped maintain proper position in extraction sites.



Final BruxZir Implant Prosthesis in place over eight Hahn Tapered Implants.

*View these and other clinical cases at [glidewell.com/hahnimplant](http://glidewell.com/hahnimplant).*

## HAHN SURGICAL AND PROSTHETIC INSTRUMENTATION

The instrumentation kits allow the clinician to easily organize, transport, and sterilize the surgical and prosthetic tooling. The autoclavable kits have been designed for ease of use, with component markings for easy identification.



### Surgical Kit

Color-coded surgical kit and drills clearly map the drilling protocol for each implant.



### Osteotomes

Facilitate the placement of Hahn Tapered Implants in areas of soft bone.



### Prosthetic Kit

Helps to simplify restorative procedures.

*All instrumentation is manufactured in the U.S.A. or Switzerland. For specific country of origin, please refer to the individual item label.*

# MAXIMIZE EFFICIENCY WITH HAHN GUIDED SURGERY

Featuring a simplified surgical protocol and engineered for maximum precision, the **Hahn Guided Surgery System** allows clinicians to place Hahn Tapered Implants in the safest, most efficient manner possible while reducing surgical *and* restorative costs.



- The Hahn Guided Surgical Kit includes a straightforward, user-friendly drilling sequence
- Drills include built-in depth stops and diameter-specific sizes that eliminate the need for guide keys or handles
- Fully guided from start to finish, with a single kit for 3.0, 3.5, 4.3 and 5.0 mm Hahn Tapered Implants
- Take advantage of Hahn bundle pricing with Glidewell Digital Treatment Planning and get 20% off your lab fees every time you restore a Hahn implant at Glidewell

*All instrumentation is manufactured in the U.S.A. or Switzerland. For specific country of origin, please refer to the individual item label.*

## OPTIMIZE YOUR RESULTS WITH GLIDEWELL DIGITAL TREATMENT PLANNING

To make the most of your Hahn system and achieve an ideal prosthetic outcome, choose Glidewell **Digital Treatment Planning** for your guided surgery cases, from single-unit restorations in the esthetic zone to full-mouth reconstructions.



Starting at  
**\$395**

**Hahn Digital Treatment Planning Bundle** includes a surgical guide, Hahn implant, healing abutment and a transfer coping or scan body.



Learn more at [glidewell.com/dtp](https://glidewell.com/dtp)



# COMPREHENSIVE PROSTHETIC OPTIONS...

Select from a comprehensive assortment of prosthetic components designed to facilitate a full range of traditional and contemporary restorative protocols. All Hahn Tapered Implants feature a conical internal hex connection for a secure prosthetic seal.



## Contoured Healing and Matching Transfers

Contoured to prepare the soft tissue for a more natural emergence profile, Hahn Tapered Implant Healing Abutments are available in multiple heights to accommodate varying gingival thickness. When healing is complete, precisely capture the gingival anatomy with a matching impression coping for a predictable, esthetic result.

## Esthetic Abutment Solutions

With contoured margins specifically designed for anterior and posterior regions of the mouth, straight or angled Hahn Tapered Implant Titanium Esthetic Abutments are ideally suited for most cementable crown-and-bridge applications. For full-arch restorations, Hahn Tapered Implant Multi-Unit Abutments are available in straight and angled configurations, and are supported by a full line of prosthetic accessories.



## Additional Solutions

The Hahn Tapered Implant System also features an assortment of temporary abutments, scan bodies, UCLA abutments, and more.

# SIMPLIFIED BONE GRAFTING SOLUTIONS



To complete your implant armamentarium, choose Newport Surgical™ as a simplified set of high-quality bone grafting materials, membrane and instruments for reliably performing the majority of bone grafting procedures.



Learn more at [glidewell.com/newportsurgical](http://glidewell.com/newportsurgical) or call 888-303-3975

# SAVE BIG ON YOUR LAB BILL EVERY TIME

As both the manufacturer of the Hahn Tapered Implant System and the most experienced U.S. dental lab — with over two million implant cases restored — Glidewell is pleased to offer 20% off every time you restore a Hahn case. In addition to lowering your surgical costs, Hahn can help you save thousands of dollars a year on your lab bill.

## PREDICTABLE, FLAT-RATE LAB FEES WITH NO HIDDEN COSTS

Exclusive Pricing for Restorations Over Hahn Implants



**\$366\***

IPS e.max® Crown with  
Custom Abutment  
(\$457 list price)



**\$239\***

BruxZir® Screw-Retained  
Crowns  
(\$299 list price)



**\$2,719\***

BruxZir® Implant  
Prosthesis  
(\$3,399 list price)

## LIFETIME WARRANTY – FROM IMPLANT TO RESTORATION

You and your patients can rest assured



\*Discount offered only at Glidewell and cannot be combined with any other special offers. Case must include an implant-level or multi-unit abutment-level impression with a Hahn transfer coping or a digital scan with a Hahn scanning abutment. Impressions over cementable abutments are not eligible for discount.



# POWERFUL SOLUTIONS FOR GROWING YOUR PRACTICE

When you choose the Hahn Tapered Implant, you not only get proven designed features based on Dr. Hahn's 50 years of clinical experience — you also have access to valuable training, education and support from Glidewell. Wherever you are in your implant journey, we offer an array of live courses for expanding your skill set through Glidewell Clinical Education as well as our partnership with the prestigious Misch-Resnik Implant Institute. In addition, we support you with an array of FREE online CE:

- Live and interactive webinars and study club, including exclusive content for Hahn users
- Comprehensive library of on-demand online courses
- Professionally produced step-by-step technique guides and how-to videos



Glidewell Clinical Education offers an array of live, in-person courses that can help you add valuable new implant procedures to your practice. To register, visit [glidewellcecenter.com](http://glidewellcecenter.com).

“Because of the high reputation of Glidewell as both a dental lab and implant manufacturer, I was intrigued by their CE programs and decided to attend a two-day course. Their instructors really know how to simplify complex subject matter, and they provided me with the skill I needed to confidently implement the new procedures I learned when I returned to my office.”

– **Stephanie Tilley, DMD**  
Pensacola, Florida



# ABOUT THE MANUFACTURER

Prismatik Dentalcraft was established in 2006 by a carefully assembled team of experts with decades of combined experience in the design, engineering, and manufacture of dental implants. Bolstered by a support staff of highly respected researchers, material scientists, clinical specialists, and dental technicians, Prismatik is dedicated to advancing implant therapies by combining proven treatment protocols with progressive materials, technologies, and techniques.



## Expert Personnel

Our team of experts have decades of combined experience in the design and manufacture of dental implants.



## State-of-the-Art Equipment

Our Swiss-type lathes and multi-axis milling machines are ideal for implants and prosthetics requiring extreme precision.



## Made in the USA

Our ISO-certified facility in Irvine, Calif. operates under FDA Current Good Manufacturing Practices (CGMPs).

## REFERENCES

1. Anderson S, Park N. Long-term clinical and radiographic evaluation of a novel implant design: a retrospective study. For the full report, visit [glidewell.com/hahn/6-year](http://glidewell.com/hahn/6-year).
2. Kerr M, Allen B, Park N. Clinical and radiographic evaluation of tapered implants with an aggressive reverse buttress thread and crestal microthreads: a retrospective study. For the full report, visit [glidewell.com/hahn/2-year](http://glidewell.com/hahn/2-year).
3. Gracis S, Llobell A, Bichacho N, Jahangiri L, Ferencz JL. The Influence of Implant Neck Features and Abutment Diameter on Hard and Soft Tissues Around Single Implants Placed in Healed Ridges: Clinical Criteria for Selection. *Int J Periodontics Restorative Dent.* 2020 Jan/Feb;40(1):39-48.
4. Germanier Y, Tosatti S, Broggin N, Textor M, Buser D. Enhanced bone apposition-around biofunctionalized sandblasted and acid-etched titanium implant surfaces. *Clin Oral Implants Res.* 2006 Jun;17(3):251-7.
5. Dohan Ehrenfest DM, Coelho PG, Kang BS, Sul YT, Albrektsson T. Classification-of osseointegrated implant surfaces: materials, chemistry and topography. *Trends Biotechnol.* 2010 Apr;28(4):198-206. doi: 10.1016/j.tibtech.2009.12.003. Epub 2010 Jan 29.
6. Kim YK, Kim SG, Kim JH, Yi YJ, Yun PY. Prospective study of tapered resorbable blasting media surface implant stability in the maxillary posterior area. *Oral Surg Oral Med Oral Pathol Oral Radiol.* 2012 Jul;114(1):e19-24. doi: 10.1016/j.tripleo.2011.08.028. Epub 2012 Feb 28.
7. Abuhussein H, Pagni G, Rebaudi A, Wang HL. The effect of thread pattern upon implant osseointegration. *Clin Oral Implants Res.* 2010 Feb;21(2):129-36. doi: 10.1111/j.1600-0501.2009.01800.x. Epub 2009 Aug 25.
8. Hermann JS, Jones AA, Bakaeen LG, Buser D, Schoolfield JD, Cochran DL. Influence of a machined collar on crestal bone changes around titanium implants: a histometric study in the canine mandible. *J Periodontol.* 2011;82:1329-1338.
9. Ormianer Z, Palti A. Retrospective clinical evaluation of tapered screw-vent implants: results after up to eight years of clinical function. *J Oral Implantol.* 2008;34(3):150-60.
10. Goswami M. Comparison of crestal bone loss among two implant crest module designs. *MJAFI.* 2009;65:319-322.
11. Torroella-Saura G, Mareque-Bueno J, Cabratosa-Termes J, Hernández-Alfaro F, Ferrés-Padró E, Calvo-Guirado JL. Effect of implant design in immediate loading. A randomized, controlled, split-mouth, prospective clinical trial. *Clin Oral Implants Res.* 2015 Mar;26(3):240-4.
12. Eraslan O, Inan O. The effect of thread design on stress distribution in a solid screw implant: a 3D finite element analysis. *Clin Oral Investig.* 2010 Aug;14(4):411-6.
13. Alves CC, Neves M. Tapered implants: from indications to advantages. *Int J Periodontics Restorative Dent.* 2009 Apr;29(2):161-7.
14. Moergel M, Rocha S, Messias A, Nicolau P, Guerra F, Wagner W. Radiographic evaluation of conical tapered platform-switched implants in the posterior mandible: 1-year results of a two-center prospective study. *Clin Oral Implants Res.* 2015 Jun 21.



888-303-3975



[glidewelldirect.com](http://glidewelldirect.com)



**PRISMATIK  
DENTALCRAFT, INC.**

(A wholly owned subsidiary of Glidewell Laboratories)  
2212 Dupont Dr. • Irvine, CA 92612

**HAHN™**  
TAPERED IMPLANT SYSTEM